



University of Isfahan English Proficiency Test (UIEPT)

آزمون بسندگی زبان انگلیسی دانشگاه اصفهان



| تأ شماره | از شماره | تعداد سؤال | مواد امتحانی |
|----------|----------|-------------------------------|--------------|
| ۱۵ | ۱ | ۱۵ | شنیداری |
| ۳۵ | ۱۶ | ۲۰ | گرامر |
| ۴۵ | ۳۶ | ۱۰ | واژگان |
| ۷۰ | ۴۶ | ۲۵ | درک مطلب |
| بخش E | | یک موضوع از دو موضوع داده شده | نوشتاری |

نام و نام خانوادگی:

شماره دانشجویی:

رشته/گرایش تحصیلی:

دانشگاه/دانشکده:

دوره آزمون: ۱۳۶



تعداد سؤالات: ۷۰ سؤال چهارگزینه‌ای + ۱ سؤال نوشتاری



تعداد صفحات دفترچه: ۱۳ صفحه



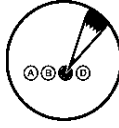
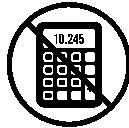
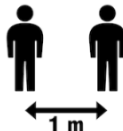
زمان پاسخگویی: ۱۱۰ دقیقه (۲۰ دقیقه بخش نوشتاری و ۹۰ دقیقه برای ۷۰ سؤال بقیه بخش ها)



تاریخ برگزاری: ۱۴۰۴/۱۲/۰۷



محل برگزاری: اصفهان، میدان آزادی، دانشگاه اصفهان، سه راه زبان، ساختمان شهید بهشتی



- کلیه پاسخ‌ها باید در پاسخنامه علامت زده شود. پاسخ سؤالات باید با مداد مشکی نرم و پرننگ در بیضی مربوط علامت گذاری شود.
- لطفاً در دفترچه سؤالات و ذیل پاسخنامه، کلیه مشخصات خواسته شده را درج و امضا نمایید.
- فرایند برگزاری آزمون به شرح زیر است: در ابتدا بخش نوشتاری به مدت ۲۰ دقیقه انجام خواهد شد. سپس بخش شنیداری و پس از آن بخش های دیگر. مدت زمان بخش شنیداری و دیگر بخش ها، ۹۰ دقیقه می باشد. مدت زمان کل آزمون از زمان شروع بخش نوشتاری ۱۱۰ دقیقه می باشد.
- این آزمون نمره منفی ندارد.
- این آزمون شامل ۷۰ سؤال چهارگزینه‌ای به علاوه بخش نوشتاری می‌باشد. همه سؤالات بخشهای شنیداری، گرامر، واژگان و درک مطلب نمره مساوی دارند. هر سؤال 1.29 نمره از ۹۰ دارد. بخش نوشتاری ۱۰ نمره از ۱۰۰ نمره دارد. نمره کلی آزمون از ۱۰۰ محاسبه می شود: $70 \times 1.29 = 90 + 10 = 100$
- در بخش نوشتاری آزمون باید یکی از دو موضوع داده شده را انتخاب کرده و حدود ۱۵۰ کلمه در مدت زمان ۲۰ دقیقه درباره آن بنویسید.
- تعداد صفحات سوال (غیر از صفحه حاضر) ۱۳ صفحه می باشد. یک برگ پاسخنامه برای سؤالات چهارگزینه ای و یک برگ پاسخنامه بخش نوشتاری نیز داده خواهد شد. پاسخنامه اضافی نوشتاری تحویل نخواهد شد ولی در صورت نیاز می توانید از صفحه پشت پاسخنامه نوشتاری استفاده کنید.
- نمرات به صورت کارنامه، حداکثر تا ۷۲ ساعت بعد در سایت مرکز زبان آموزی به نشانی ulc.ui.ac.ir اعلام خواهد شد.
- هرگونه نظر در خصوص آزمون و یا تذکر اشکال احتمالی را می توانید به ایمیل مرکز زبان آموزی دانشگاه اصفهان به نشانی ulc.ui.ac.ir@gmail.com ارسال فرمایید.
- به عنوان نمونه سؤال، پس از تحویل پاسخنامه، و صرفاً پس از اتمام آزمون، می توانید دفترچه سؤالات را به همراه خود ببرید.
- کلید اولیه سؤالات پس از آزمون در کانال ایتهای مرکز زبان آموزی قرار می‌گیرد. اگر در هنگام آزمون، پاسخ هر سوال را علاوه بر درج در پاسخنامه، در کنار هر سؤال هم بگذارید، پس از آزمون هم می توانید نمره خود را محاسبه نمایید و هم اشکالات خود را ملاحظه نمایید. این امر جنبه یادگیری هم دارد.
- قبل و بعد از آزمون، همه تلاش برای به حداکثر رساندن میزان روایی و پایایی آزمون انجام می شود. پس از آزمون نیز، تک تک سؤالات مورد بررسی قرار می گیرد و اگر سوالی دارای استانداردهای آزمون سازی نباشد حذف می شود و نمره آن به دیگر سؤالات اضافه می شود.
- ۸۰ دوره دفترچه سؤالات، فایل صوتی و کلید آزمونهای گذشته به صورت رایگان در سایت مرکز زبان آموزی وجود دارد. برای ایجاد انگیزه جهت مطالعه این آرشیو ارزنده، در هر دوره آزمون، تعداد ۱۰ سؤال از سؤالات دوره‌های گذشته انتخاب می شود. برای دسترسی به این آرشیو، به سایت مرکز مراجعه نمایید یا از طریق لینک مستقیم b2n.ir/uiiept_archive دانلود نمایید.
- جهت اطمینان از عدم به همراه داشتن هر گونه وسیله الکترونیک، با استفاده از ابزار تشخیص وسایل الکترونیک، در هنگام ورود به جلسه و نیز در هنگام برگزاری آزمون، بررسی‌های لازم انجام می‌شود.
- پس از اعلام نمرات، سامانه نمرات اتوماتیک بسته می شود و امکان هیچ گونه تغییر نمره وجود نخواهد داشت.

برای شما داوطلبین گرامی، آرزوی موفقیت داریم.

Part A: Listening

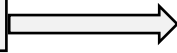


Listen and mark your answers to questions 1-15 in the answer sheet. The audio will be played only once.

به فایل صوتی با دقت گوش دهید و پاسخ سوالات ۱ تا ۱۵ را در پاسخنامه علامت بزنید. فایل صوتی تنها یک بار پخش خواهد شد.



Section A: Questions 1-10



Short Conversations



1) What does the man imply?

- A) He regrets not being able to support her. .
- B) He didn't know the event was happening.
- C) He thought someone else would manage the booth
- D) He intentionally avoided the fundraiser.

2) What does the woman suggest?

- A) He should wait for a different opportunity.
- B) He's not prepared to go abroad.
- C) He should ask someone else to apply first.
- D) He should take the risk and apply.

3) What does the man mean?

- A) He plans to redo the files himself.
- B) He doesn't like how she organized the files.
- C) He doesn't think the task was necessary.
- D) He appreciates her effort even if the task was tedious.

4) What does the woman suggest?

- A) The meeting was completely unnecessary.
- B) The man handled the situation skillfully.
- C) She didn't pay attention during the meeting.
- D) The disagreements were never serious.

5) What does the man imply?

- A) He doesn't want to make changes.
- B) He planned to be vague on purpose.
- C) He thinks the client's request is unreasonable.
- D) He won't be able to finish by Thursday

6) What does the woman suggest?

- A) He should complete the report without the numbers.
- B) He should delay the report.
- C) He should remind accounting to send the data.
- D) Accounting has already sent the numbers.

7) What does the man mean?

- A) He's withdrawing from the volunteer work.
- B) He was forced to sign up.
- C) He's prioritizing the volunteer project.
- D) He has no time at all to help.

8) What does the woman mean?

- A) The project is going smoothly.
- B) Her teammates are equally involved.
- C) She's handling most of the project alone.
- D) She hasn't started the project yet.

9) What does the man mean?

- A) He felt the meeting didn't apply to his work.
- B) He overslept and missed the meeting.
- C) He didn't want to attend any meetings.
- D) He didn't know there was a meeting.

10) What does the woman imply?

- A) She has already applied.
- B) She will not be able to attend the conference.
- C) She's looking for other travel options.
- D) She still plans to apply.

Section B: Questions 11-15

Lecture



11) What is the main topic of the lecture?

- A) The military victories of the Roman Empire
- B) How trade developed across Roman territories
- C) The reasons behind the fall of the Western Roman Empire
- D) Differences between Roman emperors

12) According to the professor, what was one serious internal issue Rome faced?

- A) Lack of new territories to conquer
- B) Political instability and economic decline
- C) Too many citizens leaving the cities
- D) A rebellion led by the Eastern Empire

13) What problem did the Roman military have, according to the lecture?

- A) It refused to fight without better pay
- B) It depended on foreign soldiers with weak loyalty
- C) It was often busy building infrastructure
- D) It didn't have weapons to match the invading tribes

14) Why was the Eastern empire in a stronger position than the Western empire?

- A) It had stronger religious leaders
- B) It was wealthier and had better cities
- C) It received more support from the Roman Senate
- D) It had a larger military presence in Africa

15) What does the professor suggest about the common idea of Rome's fall?

- A) It accurately reflects the historical timeline
- B) It simplifies what was actually a long process
- C) It exaggerates the role of the Eastern Empire
- D) It focuses too much on military achievements



Note-taking Box

Part B: Grammar



Section 1. Read each test item carefully and answer the questions by choosing the answer (a), (b), (c) or (d). Then mark the correct choice on your answer sheet.

تشخیص گزینه صحیح

16) Petroleum ... on every continent and beneath every ocean.

- A) is found B) found C) are found D) find

17) Cubism was the result ... a gradual process of change.

- A) on B) with C) in D) of

18) Supernovas are caused ... a star dies.

- A) as when B) that C) when D) it is

19) The widespread use of oil and gas to make chemical ... during the 1020s.

- A) has begun B) began C) beginning D) begun

20) ... in 1776 that the Declaration of Independence was signed.

- A) It was B) There was C) There D) It

21) Pumpkin seeds, ... protein and iron, are a popular snack.

- A) that B) provide C) which D) which provide

22) Hormones have many jobs, from promoting bodily growth to ... to regulating metabolism.

- A) aid digestion C) aiding digestion
B) be of aid to digestion D) an aid of digestion

23) Temperature, the simplest weather element to measure, is probably ... used than any other kind of data.

- A) more frequently B) most frequently C) as frequently D) frequently

24) ... in science was important for Faraday.

- A) Children that were interested C) That children should be interested
B) That children interested D) That interested children

25) ... used simple instruments, the Greek astronomer, Hipparchus, made the first accurate map of the stars 2100 years ago.

- A) Even though B) Even though he C) Nevertheless D) In spite of



Section 2. Choose the underlined words or phrases that need to be corrected. Mark the answers on your answer sheet.

تشخیص گزینه غلط

26) Electrical impulses may also picked up by the optic nerve.

- A B C D

27) Most of the outer planets has large swarms of satellites surrounding them.

- A B C D

- 28) Melons most probably originated in Persia and were introduced the North American continent during the sixteenth century.
 A B C D
- 29) In 1964, GATT established the International Trade Centre in order to assist developing countries in the promotion of its exports.
 A B C D
- 30) The Spanish introduced not only horses and also cattle to the North American continent.
 A B C D
- 31) In the cold climate of the far north, mosquito eggs may remains dormant from autumn until late June.
 A B C D
- 32) Alaska has more active glaciers as the rest of the inhabited world combined.
 A B C D
- 33) The research for the book *Roots* taking Alex Haley twelve years.
 A B C D
- 34) Safety glass, a toughened glass sheet, is six times stronger than untreating glass.
 A B C D
- 35) Paul Revere was the son of a French immigration named Apollos Rivoire, who later began calling himself Revere to make his name easier for Americans to pronounce.
 A B C D

Part C: Vocabulary



Read each test item carefully and answer the questions by choosing the answer (a), (b), (c) or (d). Then mark the correct choice on your answer sheet.

Vocabulary Part 1: Gap-Filling

- 36) The strength of the United Nations is dependent upon the ... of its member countries.
 A) encounter B) assumption C) co-operation D) urgency
- 37) Many refugees crossed the ... between Iraq and Turkey.
 A) scratch B) frontier C) threshold D) scope
- 38) Attention is essential in achieving anything. If you can't pay attention, you can't get the job
 A) taken B) made C) tried D) done

39) There is no single or widely used definition of children's literature. It can be ... defined as anything that children read.

- A) broadly B) optimistically C) controversially D) neutrally

40) I want your help with my literature review.... to the e-mail are some questions.

- A) Raised B) posed C) Inquired D) Attached

Vocabulary Part 2: Synonym

41) Flavored vinegars are produced especially for cooking.

- A) Bitter B) concentrated C) special tasting D) sour

42) A benign lesion usually has a regular border.

- A) harmless B) dangerous C) congenial D) humane

43) The couple, intrepid explorers, went into the Amazon.

- A) rich B) ruthless C) timid D) daring

44) He went to the park every other day.

- A) alternate B) whole C) part D) every three days

45) The yellow flowers were profuse along the mountain road.

- A) plenty B) rare C) non-existent D) beautiful

Part D: Reading Comprehension

➤ Read the texts carefully and choose the best answer to the questions that follow.

Reading 1

Napoleon Bonaparte was a French general and statesman who rose to prominence during the French Revolution and led a series of military campaigns across Europe during the French Revolutionary and Napoleonic Wars from 1796 to 1815. He led the French Republic as First Consul from 1799 to 1804, then ruled the French Empire as Emperor of the French from 1804 to 1814, and briefly again in 1815. He was King of Italy from 1805 to 1814, Protector of the Confederation of the Rhine from 1806 to 1813, and Mediator of the Swiss Confederation from 1803 to 1813.



Born on the island of Corsica to a family of Italian origin, Napoleon moved to mainland France in 1779 and was commissioned as an officer in the French Royal Army in 1785. He

47) Why does the author include Napoleon's sale of Louisiana in the passage?

- A) To illustrate how France financed its European wars.
- B) To describe a domestic reform improving agriculture.
- C) To present an early example of cultural cooperation.
- D) To show Napoleon's refusal to abandon overseas colonies.

48) Which treaty's breakdown led to the War of the Third Coalition?

- A) Treaty of Paris
- B) Treaty of Versailles
- C) Treaty of Amiens
- D) Treaty of Wagram

49) What role did Napoleon hold during his first period of rule over France from 1799 to 1804?

- A) Emperor of the French
- B) President of the French Republic
- C) King of Italy
- D) First Consul

50) What happened to Napoleon after his final defeat?

- A) He was executed in France.
- B) He regained control of France.
- C) He was exiled to Saint Helena.
- D) He retired in Corsica.

51) What can be inferred about Napoleon's leadership qualities from his military success?

- A) He was an indecisive commander.
- B) He relied solely on luck.
- C) He avoided risk.
- D) He was a highly ambitious leader.

52) The phrase "decisive victories" in the 2nd paragraph of the passage most nearly means....

- A) Partial successes
- B) Conclusive wins
- C) Small improvements
- D) Temporary achievements

53) Why does the author conclude with details of Napoleon's exile and death?

- A) To present a complete narrative arc from rise to downfall.
- B) To emphasize the political strength of his successors.
- C) To discuss how his memoirs altered historical writing.
- D) To contrast his success with earlier French monarchs.

54) What was the primary destination of Napoleon's first abdication and exile?

- A) The remote island of Saint Helena in the South Atlantic.
- B) The small Mediterranean island of Elba.
- C) Corsica, his native island of origin.
- D) The central French city of Paris.

Reading 2

When a paper I had spent years working on tirelessly was published in *Science*, others expected me to be happy. One senior scientist immediately urged me to work on securing my own funding for a follow-up project and added, “If you want to become a PI [principal investigator], you now have to give 150%.” The advice was well-



-meaning; in **his** view, the *Science* publication was a step toward a job leading a lab. But it wasn't clear how I would find the energy to keep going. After 8 years pouring myself into one postdoc project and submitting to *Nature* and *Science*, I barely had 50% left.

Years earlier, when I moved to France to start the project, I was full of enthusiasm and happy to work long hours. But as time went on and I struggled to get my project off the ground, pressure and insecurity became my main motivators. If I failed, I feared I would never get a job in academia. Haunted by low self-esteem, I put pressure on myself to work harder and felt guilty whenever I took a break. Weekends disappeared into experiments, vacations shrank to a few days, and my mind no longer knew how to rest. Nearly 3 years into the project, I finally saw a glimmer of hope: Under specific conditions, my mutants began to show a **phenotype**. It wasn't the dramatic breakthrough I had imagined, but as I followed these early hints, the findings deepened.

Around that time, our group realized another lab was poised to potentially scoop us. That ramped up my anxiety even further. After some time working separately, we decided to join forces with our competitors. That eased the pressure. But I constantly feared they'd end the collaboration and submit first, as my experiments were perpetually behind schedule. Eventually, though, we submitted a joint paper to *Nature*. The manuscript was rejected. But the editor left a small back door open, so we worked through about 50 reviewer comments, running new experiments and rewriting the paper—an effort that consumed 1 year of work. After another rejection, we fought on for another year. In the end, the appeal was denied. The editors offered to send the manuscript to one of *Nature*'s sister journals, which could have been an easier path to publishing. But we opted to submit to *Science* instead.

When the next round of reviewer comments—some very negative—came back, I almost cried. “Not again,” I remember thinking. Again it took well over a year to address another long round of revisions. But in the end we received an acceptance letter.

When the paper finally appeared in print, I was in no condition to rejoice. An old tic disorder had returned. My back and neck ached constantly. Skin rashes appeared. I struggled with focus, depression, and exhaustion. My creativity and energy had deserted me. I tried to write a follow-up grant but I couldn't finish it. I was spent in body and mind. After my postdoc contract was not renewed, I decided not to seek a new position in academia because I feared the stress would overwhelm me. I spent 2 years sending applications to biotech and pharma companies, without success. Unemployed and receiving basic social welfare, I felt worthless and like an even bigger failure. This was the lowest point of my life, and I sought psychotherapy. It helped me see that I had tried to mold myself to academic expectations and lost sight of who I was and what I needed to thrive.



✓ متن فوق از جدیدترین مقالات منتشر شده در مجله ساینس (Science) است.
 ✓ این مقاله در تاریخ ۲۲ ژانویه ۲۰۲۶ منتشر شده است. آزمون حاضر در تاریخ ۲۶ فوریه ۲۰۲۶ برگزار می‌شود.
 ✓ لینک دسترسی به مقاله: <https://www.science.org/content/article/how-chasing-high-impact-publication-nearly-broke-me>

55) What can be inferred about the author's perception of academic culture?

- A) It rewards balance and self-care. C) It values productivity over well-being.
 B) It discourages collaboration. D) It is becoming more inclusive.

56) What emotion best describes the author's state after finishing the project?

- A) Disappointed but still motivated C) Proud and ambitious
 B) Indifferent and detached D) Exhausted and depleted

57) The word "phenotype" in the second paragraph of the passage most nearly means

-
 A) observable genetic trait C) statistical diagram
 B) laboratory equipment D) chemical solution

58) What physical or mental problems did the author develop after publication?

- A) Heart disease C) Short-term amnesia
 B) Depression and physical pain D) Chemical dependency

59) What reaction did others have when the author's paper in "*Science*" was published?

- A) They cautioned the author against overworking.
 B) They criticized the author's publication choice.
 C) They questioned the validity of the research.
 D) They expected the author to be pleased and successful.

60) Why did the collaboration with the competing lab ease some pressure?

- A) It reduced the number of reviewer comments.
 B) It allowed the author to leave academia early.
 C) It divided the work and prevented being scooped.
 D) It guaranteed acceptance in '*Nature*'.

61) The pronoun "his" in the 1st paragraph of the passage refers to

- A) the author C) the editor at Science
 B) the senior scientist D) the lab collaborator

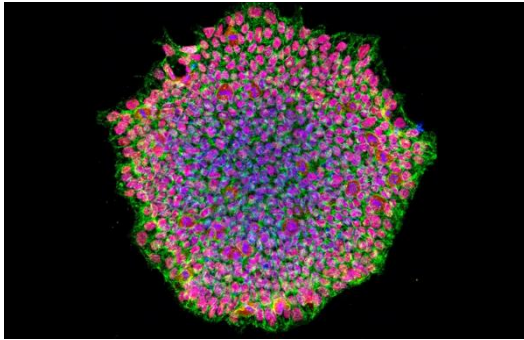
62) What does the author's inability to finish a grant proposal suggest?

- A) He was suffering from severe burnout. C) He was unsure about funding rules.
B) He lacked interest in research. D) He was seeking a career in journalism.

63) Why did the author's postdoc contract end?

- A) Due to the publication delay D) Ethical concerns about data
B) Administrative restructuring D) It was not renewed after exhaustion

Reading 3



Japan's health ministry has endorsed issuing conditional approval for two first-of-a-kind medicines. But some researchers say that the therapies — made from reprogrammed stem cells and called Amchepry and ReHeart — are not yet ready for prime time.

“This is a risky regulatory experiment,” says Paul Knoepfler, a stem-cell researcher at the University of California, Davis. Amchepry, made by Sumitomo Pharma and Racthera, both in Tokyo, for the treatment of Parkinson's disease, has been tested in seven people. ReHeart, made by Cuorips in Tokyo for severe heart failure, has been tested in eight people. But bigger trials are needed to ensure that these drugs are safe and effective, Knoepfler says.

“The data that I've seen on these looks encouraging, but it feels like early days to be talking about commercialization of such products,” he says. Regenerative-medicine researchers have long aimed to use stem cells to grow replacement cells for treating a range of diseases. These hopes were given a boost in 2006, when Shinya Yamanaka and Kazutoshi Takahashi at Kyoto University unveiled a simple recipe for **reprogramming** mature cells into induced pluripotent stem (iPS) cells. The technique provided a new source of cells that can be transformed into other cell types. Yamanaka shared a 2012 Nobel prize for his role in the work.

Researchers at Sumitomo and Racthera used this approach to develop a treatment for Parkinson's disease, a neurodegenerative condition that is caused by a loss of dopamine-producing neurons in the brain. The treatment involves collecting blood cells from volunteers, reprogramming them into iPS cells and then coaxing the reprogrammed cells into becoming dopamine-making progenitor cells. Neurosurgeons then tested the technique by transplanting these cells into the brains of people with Parkinson's disease.

Amchepry has now been tested in a small phase I/II trial, which is designed mainly to assess safety. No serious side effects occurred, investigators reported in 2025. At least four participants showed decreases in some symptoms, such as tremors. ReHeart is also made from

volunteer-derived iPS cells, but these are instead differentiated into heart muscle cells and then grown into coin-shaped patches of up to 100 million cells. These are transplanted onto the hearts of people with a type of heart disease called ischaemic cardiomyopathy to promote cardiovascular repair. In a small phase I trial, ReHeart seemed safe, investigators reported last year to The American Association for Thoracic Surgery (AATS), and showed signs of helping some participants to become more physically active.

For Hiroshi Kawaguchi, an orthopaedic surgeon at Nadogaya Hospital in Chiba, Japan, the clinical data for both drugs are “very weak”. Neither trial was big enough to assess the risks of these therapies, he says. The trials also lacked control groups, precluding firm conclusions about how much benefit they provide — if any. When researchers presented the ReHeart data to the AATS, an audience member voiced similar concerns. “You need to have a double-blind controlled trial to convince everyone,” he said.



✓ متن فوق از جدیدترین مقالات منتشر شده در مجله نیچر (Nature) است.
 ✓ این مقاله در تاریخ ۲۳ فوریه ۲۰۲۵ منتشر شده است. آزمون حاضر در تاریخ ۲۶ فوریه ۲۰۲۶ برگزار می‌شود.
 ✓ لینک دسترسی به مقاله: <https://www.nature.com/articles/d41586-026-00585-x>

64) How are ReHeart’s therapeutic cells delivered to patients?

- A) Injected intravenously into the bloodstream
- B) Administered orally through capsules
- C) Inserted through nasal delivery devices
- D) Implanted as heart patches onto the myocardium

65) What disease is Amchepry designed to treat?

- A) Severe heart failure
- B) Ischaemic cardiomyopathy
- C) Parkinson’s disease
- D) Alzheimer’s disease

66) What can be inferred about the phase I/II and phase I trials mentioned?

- A) They aim primarily to test large-scale effectiveness.
- B) Their main focus is establishing safety.
- C) They compare different drug brands.
- D) They use double-blind randomization only.

67) The word “reprogramming” as used in the 3rd paragraph of the passage is closest in meaning to

- A) altering cell identity
- B) cloning new organisms
- C) restoring physical function
- D) deleting genetic material

68) What can be inferred about the research of Yamanaka and Takahashi?

- A) It focused mainly on animal models, not humans.
- B) It made stem-cell therapies possible without using embryos.
- C) It rendered cell therapy ethically unacceptable.
- D) It failed to receive recognition from the scientific community.

69) Why might researchers like Kawaguchi be skeptical of the results?

- A) The data were collected over too many years.
- B) The findings contradicted previous animal studies.
- C) The trials were uncontrolled and small in scale.
- D) The participants refused surgical treatment.

70) What decision has Japan's health ministry made regarding Amchepry and ReHeart? It has

- A) rejected both treatments completely. C) delayed their release for five more years.
B) restricted them to foreign clinical use. D) It has endorsed conditional approval for them.



Part E: Writing

Choose one of the following topics and write an essay about it. Write for at least 150 words in no more than 20 minutes.

A) Some people think that human needs for farmland, housing and industry are more important than saving land for endangered animals. To what extent do you agree with this view? Give reasons for your answer and include any relevant examples from your own experience or knowledge.

B) Some people think that teachers at school are more responsible for children's intellectual and social development than parents. To what extent do you agree or disagree? Give reasons for your answer and include any relevant examples from your own experience or knowledge.



THIS IS THE END OF THE TEST.

دوره‌ها و آزمون‌های بسندگی دانشجویان دکتری

مرکز زبان آموزی دانشگاه اصفهان

زمستان ۱۴۰۴



برگزاری آزمون بسندگی
زبان انگلیسی دانشگاه اصفهان
(UIEPT)

دوره ۱۴۷

پنجشنبه

۱۴ اسفند ۱۴۰۴

محل برگزاری آزمون:
دانشگاه اصفهان، دانشکده زبانهای خارجی
مرکز زبان آموزی، ساختمان شهید بهشتی

۰۳۱۳۷۹۳۳۱-۲۳

ulc.ui.ac.ir

جهت دریافت آدرس
از نشان اسکن کنید:

جزئیات بیشتر در بخش اخبار و
اطلاعیه های سایت



مرکز زبان آموزی دانشگاه اصفهان
برگزاری کلاس

۶ دوره آزمون
بسندگی زمستان ۱۴۰۴

| دوره آزمون | تاریخ | ردیف |
|------------|------------------|------|
| ۱۳۲ | پنجشنبه ۱۱ دی | ۱ |
| ۱۳۳ | پنجشنبه ۱۸ دی | ۲ |
| ۱۳۴ | پنجشنبه ۲ بهمن | ۳ |
| ۱۳۵ | پنجشنبه ۳۰ بهمن | ۴ |
| ۱۳۶ | پنجشنبه ۷ اسفند | ۵ |
| ۱۳۷ | پنجشنبه ۱۴ اسفند | ۶ |

ulc.ui.ac.ir eitaa.com/uile_official



مرکز زبان آموزی دانشگاه اصفهان

- مشاوره تخصصی زبان
- به صورت تلفنی و رایگان
- یکشنبه و سه شنبه ها ساعت ۹ تا ۱۲ قبل از ظهر

آزمون های زبان داخلی و خارجی:

(IELTS, TOEFL, PTE, SAT, GRE, MSRT, MCHE, UIEPT, EPT, TOLIMO, MHLE, OPI, OET, MELAB, iTEP, Cambridge Exams (KET, PET, FCE, CAP, CPE), and TOEIC)

دوره های مکالمه، ترجمه، بحث، دوره های ترمیک کودک، نوجوان و بزرگسال، کلاس ها و آزمون بسندگی دانشجویان دکتری، زبان عمومی، مقاله نویسی و ...

09395809376

ulc.ui.ac.ir

ol.ui.ac.ir

eitaa.com/uile_official

ulc.ui.ac.ir@gmail.com